



National Institute of Food and Agriculture

U.S. DEPARTMENT OF AGRICULTURE

BIOENERGY, CLIMATE, AND ENVIRONMENT
FOOD PRODUCTION AND SUSTAINABILITY
YOUTH, FAMILY, AND COMMUNITY
FOOD SAFETY AND NUTRITION
INTERNATIONAL PROGRAMS

NIFA

Nutrition Security Webinar

January 25, 2022

INVESTING IN SCIENCE | SECURING OUR FUTURE | WWW.NIFA.USDA.GOV

USDA IS AN EQUAL OPPORTUNITY PROVIDER, EMPLOYER, AND LENDER

USDA FY2022 Priorities

- **Addressing Climate Change via Climate-smart Agriculture and Forestry**
- **Advancing Racial Justice, Equity and Opportunity**
- **Creating More and Better Market Opportunities**
- **Tackling Food and Nutrition Insecurity**
- **Making USDA a Great Place to Work for Everyone**





NIFA 2021 Nutrition Security Accomplishments

- **NIFA invested more than \$200 million in research, education, extension, and innovation through five key nutrition programs to advance USDA's goal to tackle food and nutrition insecurity**
- **NIFA leveraged more than 20 NIFA programs to help prioritize nutrition security**
- **NIFA is strengthening intersections with climate-smart agriculture**
- **NIFA launched this new Nutrition Security webinar series and hosted four webinars in FY21**



NIFA Nutrition Security Team

Institute of Bioenergy, Climate, and Environment (IBCE)

Amber Campbell (Market Opportunities Team Liaison)
Daniel (Patrick) Cassidy
Amy Ganguli
Victoria Finkenstadt
Kevin Kephart (Climate Team Liaison)
Sandeep Kumar
Emma Moran
Hannah Moshay
Eric Norland (Climate Team Liaison)
Megan O'Rourke (Climate Team Liaison)
Adam Wilke

Institute of Food Production and Sustainability (IFPS)

Dereck Alexander
Lelan Dixon
Robert Godfrey (Co-Team Lead)
Danielle Farley
Vijay Nandula (Food Loss & Waste Liaison)
Vance Owens
Desiree Rucker
Robbin Shoemaker
Frank Siewerdt
Ann Stapleton
Tim Sullivan
Charlotte Tuttle
Angelica Van Goor

Institute of Youth, Family, and Community (IYFC)

Keesha Corbin (Climate Team Liaison)
Richard "Brent" Elrod
Amber Gellert
Cassandra Huey (Executive Secretary)
Crystal Kale
Irma Lawrence
Ashley Mueller
Katherine Nace
Christopher Perry
Erin Riley
Sarah Rocker
Jeff Sallee
Maurice Smith
Ara Staab
Jessica Turner
Bonita Williams

Institute of Food Safety and Nutrition (IFSN)

Mark Carter
Carinthia Cherry
Helen Chipman
Sheila Fleischhacker (Co-Team Lead)
Lisa Jahns
Lydia Kaume
Mallory Koenigs
Ryan Kornegay
Stephanie Morriss (Data Analyst, Web Liaison)
Suzanne Stluka (Team Sponsor & DEIA Team Liaison)
Shoushan Zeng (Workforce Development Team Liaison)

Office of Communications

Matthew Browning
Giselle Caceres (2021 Intern)
Rachel Dotson
Lori Gula
Faith Peppers
Michael Quizon
LaRachelle Samuel-Smith
Kelly Sprute
Andy Thigpen

Office of the Director

Ari Caramanica
Carrie Castille (Director)
Parag Chitnis (Associate Director for Programs)
William Hoffman (Chief of Staff)
Joshua Stull (Stakeholder Affairs)
Drenda Williams (DEIA Liaison)



Primary:

- Expanded Food and Nutrition Education Program (EFNEP)
- Gus Schumacher Nutrition Incentive Program (GusNIP)
- Food and Agriculture Service-Learning Program (FASLP)
- Community Food Projects (CFP)
- Agricultural and Food Research Initiative (AFRI) competitive grants program, priority area, A1344 Diet, Nutrition and the Prevention of Chronic Diseases

NIFA Nutrition Security Relevant Programs

Additional:

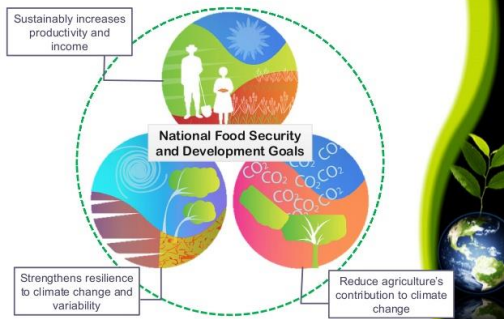
- AFRI priority areas A1641 Economics, Markets, and Trade, A1103 Foundational Knowledge of Plant Products, A9211 Sustainable Agricultural Systems
- Federally-Recognized Tribes Extension Program (FRTEP)
- Hispanic-Serving Institutions Education Grants Program (HSI)
- Sustainable Agriculture Research and Education (SARE) Program
- Beginning Farmer and Rancher Development Program (BFRDP)
- Enhancing Agricultural Opportunities for Military Veterans (AgVets)
- Master Gardener, Master Health & Master Food Preserver Programs
- Small Business Innovation Research (SBIR)
- 4-H Youth Development Program
- Children, Youth and Families at Risk (CYFAR)
- CYFAR 4-H Military Partnership Professional Development & Technical Assistance (CMPC-PDTA)
- 1890 Land-Grant Institution Programs
- National Center for Home Preservation
- New Technologies for Ag Extension (NTAE)
- Regional Rural Development
- Rural Health & Safety Education

NIFA Nutrition Security Team Priorities

- **Supporting Innovative Inter- and Trans-Disciplinary Solutions**
- **Harnessing a Holistic Research Agenda, From Farm-to-Fork**
- **Integrating with Climate-Smart Agriculture**
- **Empowering Individual and Community Agency**



What is CSA?



NIFA's Cross Priority Approach

- Address knowledge gaps & opportunities
- Spur innovation & accelerating change
- Empower individuals and communities
- Support synergies across diverse priorities

Climate Change



Nutrition Security



Diversity, Equity,
Inclusion &
Accessibility (DEIA)

Market Opportunities
Workforce Development



4-H and Youth Development continues to support nutrition security with traditional projects like crops, horticulture, and livestock, and a focus on science, technology engineering, and math (STEM)



Government-wide Equity Efforts

Equity is a key priority of the Biden-Harris administration agenda.

- There are **numerous Executive Orders** related to **equity** helping **drive concrete actions** across Government.

Primary Focus for this Effort

EO 13985

Advancing Racial Equity through the Federal Government is the governing document for **external/programmatic equity** work.

EO 14035

Diversity, Equity, Inclusion, and Access **in the Federal Workforce** is the governing document for our **internal DEIA equity** work.

The **Justice40** initiative, **tribal consultation EO**, **Customer Experience EO**, as well as several other EOs collectively contribute to our external focused EO (EO 13985) and our internal focused EO (EO 14035).

Comprehensive Equity Agenda

An array of USDA efforts are collectively contributing to a comprehensive equity agenda.



The Framework can address:

- **Social and environmental changes**
- **Realities and drivers of inequity, specifically health equity**
- **A comprehensive approach to advancing equity for all**

Food security for a household, according to the USDA ERS, means access by all members at all times to enough food for an *active, healthy life*. Food security includes at a minimum:

- The ready availability of nutritionally adequate and safe foods
- Assured ability to acquire acceptable foods in socially acceptable ways (that is, without resorting to emergency food supplies, scavenging, stealing, or other coping strategies)

Nutrition security means having consistent access, availability, and affordability of foods and beverages that *promote well-being and prevent (and if needed, treat) disease*, particularly among our nation's most socially disadvantaged populations

Mozaffarian D, Fleischhacker S, Andres JR. *JAMA*. 2021



Health equity means that everyone has a fair and just opportunity to be as healthy as possible.

- **This requires removing obstacles to health such as poverty, discrimination, and their consequences, including powerlessness and lack of access to good jobs with fair pay, quality education and housing, safe environments, and health care.**

Braveman P, Arkin E, Orleans T, Proctor D, and Plough, A.
What is health equity? Robert Wood Johnson Foundation
(2017)



Health disparities are avoidable, systematic health differences adversely affecting economically or socially disadvantaged groups.

**Braveman P, Arkin E, Orleans T, Proctor D, and Plough, A.
What is health equity? Robert Wood Johnson Foundation
(2017)**



USDA FY2022 Priorities

- **Addressing Climate Change via Climate-smart Agriculture and Forestry**
- **Advancing Racial Justice, Equity and Opportunity**
- **Creating More and Better Market Opportunities**
- **Tackling Food and Nutrition Insecurity**
- **Making USDA a Great Place to Work for Everyone**





Nutrition Programs

NIFA-Funded Research on Dietary Practices

NIFA's Nutrition Security Webinar Series

Print Tweet Share

Join USDA's National Institute of Food and Agriculture (NIFA) for its new virtual Nutrition Security Webinar Series. The series will feature speakers

Prioritizing Nutrition Security: Cooperative Extension's Framework for Health Equity and Well-Being

Print Tweet Share

Learn about the latest updates to the [Cooperative Extension's National Framework for Health Equity and Well-Being](#) on **Tuesday, January 25, 2022 at 3 to 4:30 pm EST (2 to 3:30 pm CST)**. The virtual session will be led by the Framework authors and attendees are highly encouraged to ask questions and provide feedback during the live Q&A segment and the virtual breakout sessions. This event is the sixth installment of NIFA's new monthly [Nutrition Security Webinar Series](#).

Click [here](#) to register in advance. After registering, you will receive a confirmation email with details on how to join the live session. If you have any questions or comments, please email Sheila Fleischhacker at sheila.fleischhacker@usda.gov.

<https://nifa.usda.gov/program/nifa-nutrition-security-webinar-series>

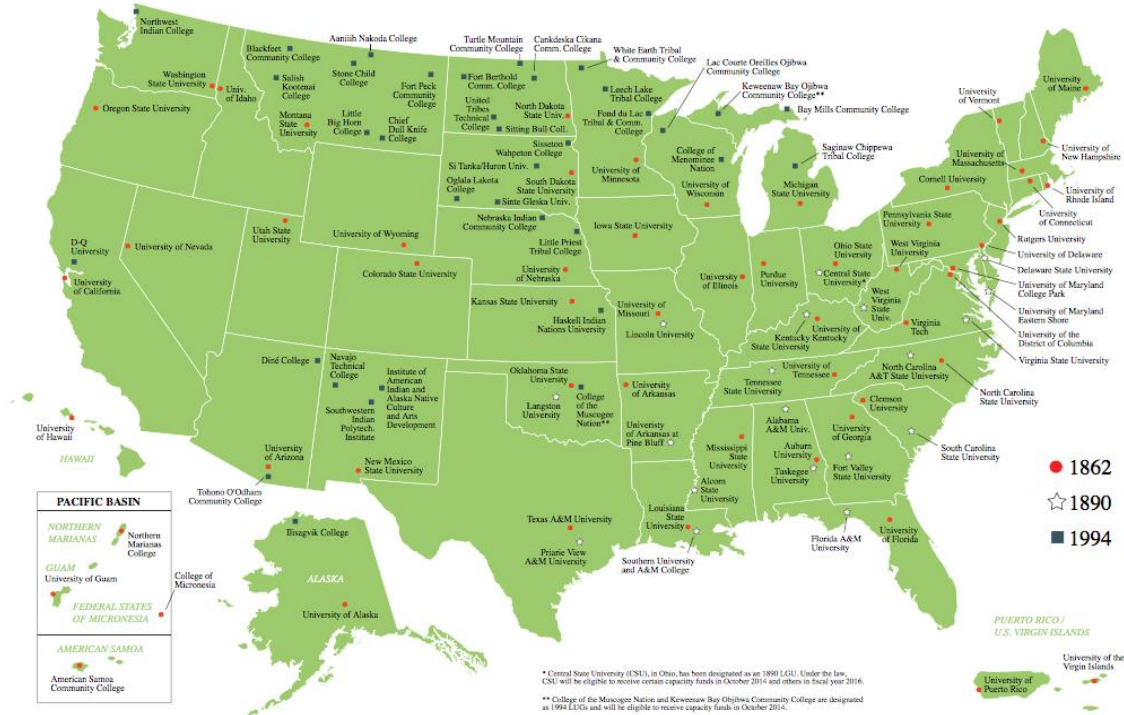


**Cooperative Extension's
National Framework for
Health Equity and Well-Being**



United States
Department of
Agriculture National Institute
 of Food and
 Agriculture

NIFA LAND-GRANT COLLEGES AND UNIVERSITIES



Development of a Roadmap for Cooperative Extension

- ▶ The Cooperative Extension System is a network comprised of the Extension “services” of the nation’s land grant universities.
- ▶ The Extension Services of LGUs are members of a representative body called the Extension Committee on Organization and Policy (ECOP).
- ▶ ECOP established a Health Innovation Task Force in 2020 to update Cooperative Extension’s National Framework for Health and Wellness originally developed in 2014.
- ▶ ECOP approved the updated version of the framework in July 2021 to serve as a roadmap for advancing the Cooperative Extension System’s work in the area of health for the next 5-7 years.

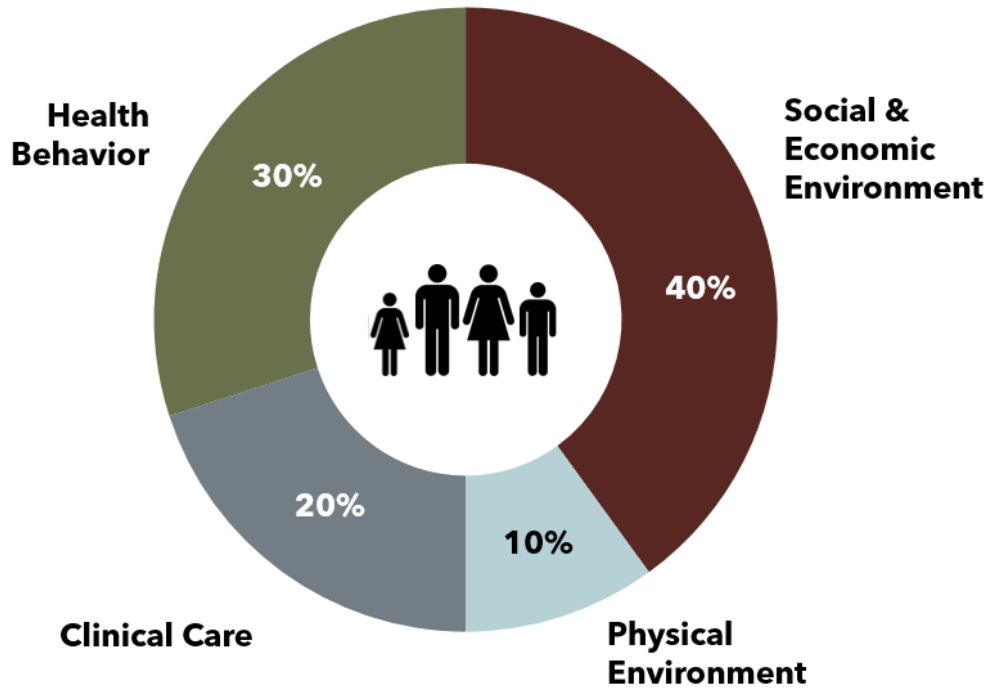
Work Group Members

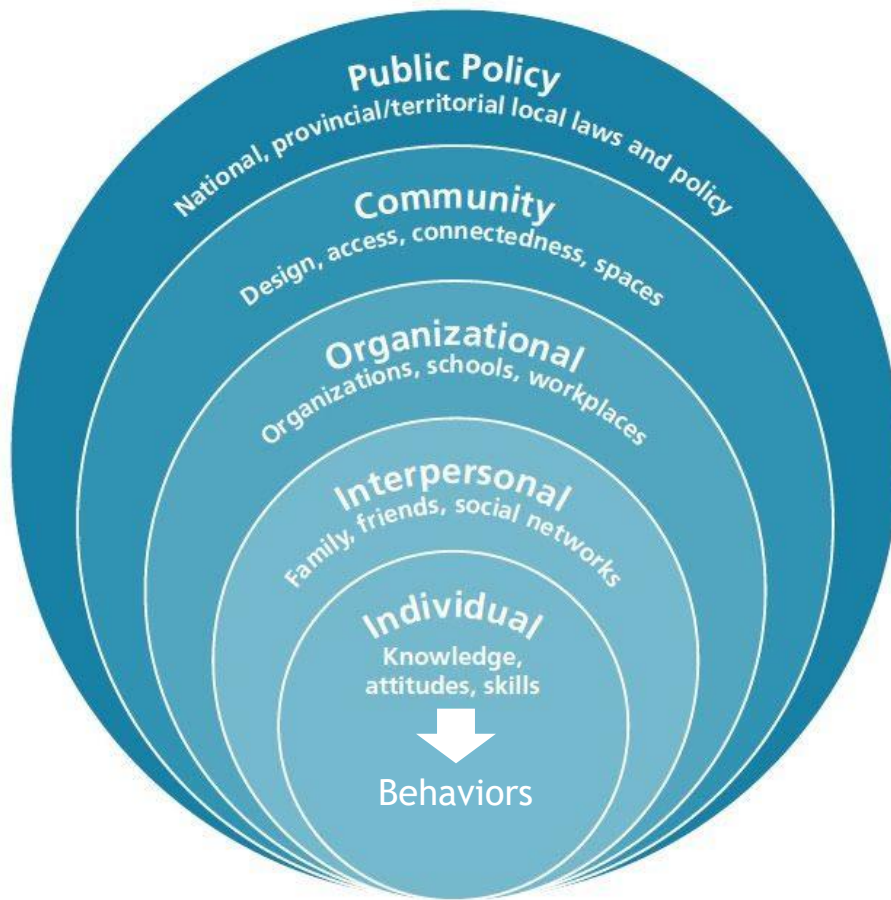
- ▶ Dawn Burton, Prairie View A&M
- ▶ Amber Canto, Wisconsin
- ▶ Tom Coon, Oklahoma State
- ▶ Cheryl Eschbach, Michigan State
- ▶ Janelle Gunn, CDC
- ▶ Mike Gutter, Florida
- ▶ Maggie Jones, CCHE
- ▶ Lauren Kennedy, Michigan State
- ▶ Karl Martin, Wisconsin
- ▶ Ali Mitchell, Northeast Extension
- ▶ LaToya O'Neal, Florida
- ▶ Roger Rennekamp, ECOP-APLU
- ▶ Michelle Rodgers, HITF Chair
- ▶ Suzanne Stluka, USDA-NIFA
- ▶ Karla Trautman, S. Dakota State
- ▶ Erin Yelland, Kansas State
- ▶ De'Shoin York, Southern University

“Every day, people make choices that impact their health. Enormous amounts of energy have been devoted to informing and influencing those choices. Unfortunately, far too little attention has been paid to the contextual influences on health. As a result, our public discourse around health has been framed as a personal responsibility where good health is seen as a personal success, ill health a personal failing.”

Burton et al. (2021)

THE DRIVERS OF HEALTH





A Social-Ecological Model for Physical Activity - Adapted from Heise, L., Ellsberg, M., & Gottemoeller, M. (1999)



An individual can only
choose among options
available to them.





How can Cooperative Extension think differently about its health-related work?

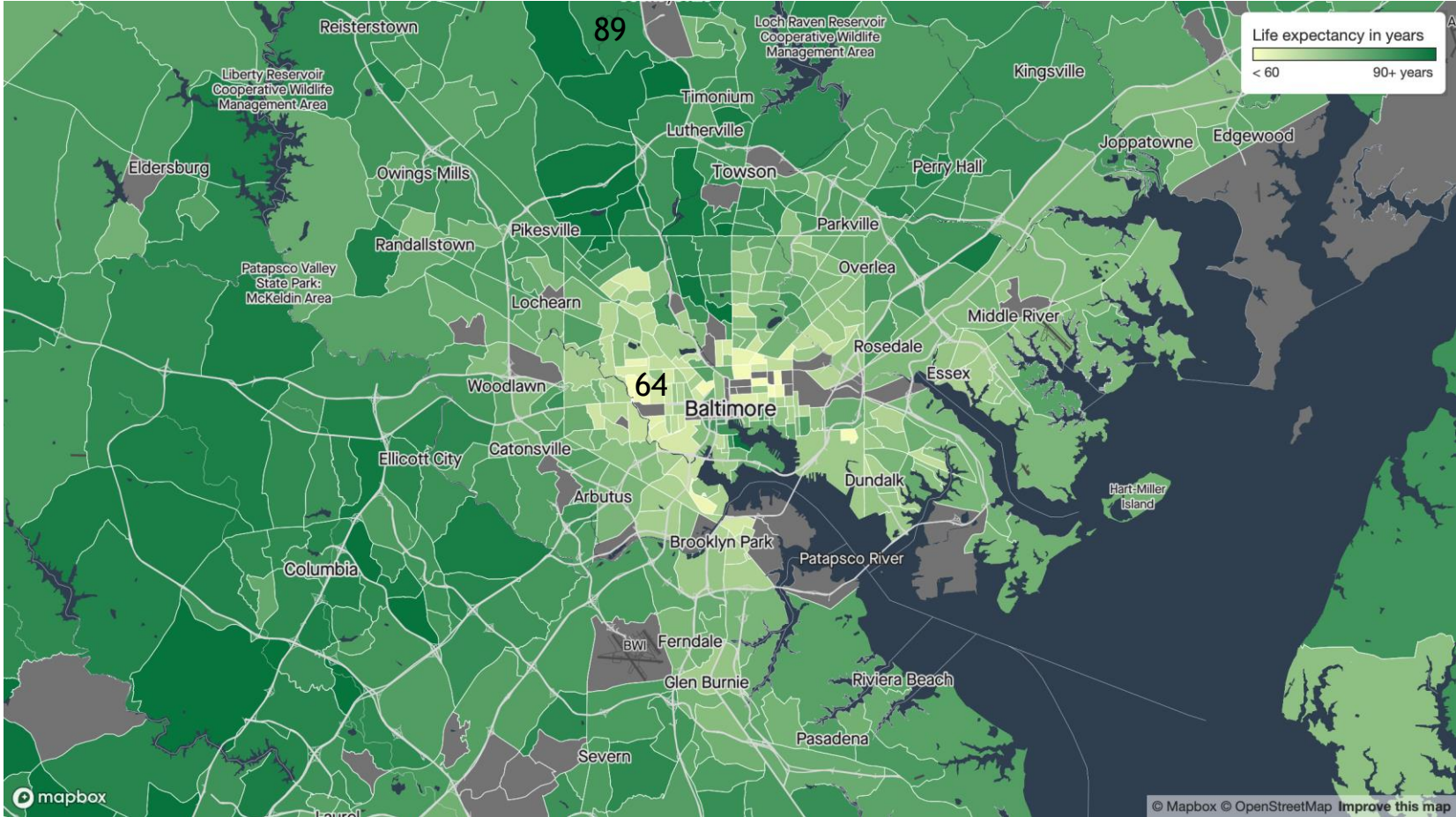
How can Cooperative Extension work in new ways to ensure that all people have an opportunity to experience optimal health ?

Three Core Themes

- ▶ **Health Equity** - Centering on health equity involves driving resources to those communities and groups that are experiencing the most significant barriers to achieving optimal health.
- ▶ **Social Determinants of Health** – Health-related work should include consideration of those factors beyond the influence of an individual such as broadband availability, transportation, access to healthy food, and quality healthcare.
- ▶ **Coalitions and Community Assets** – These are the mechanisms by which the resources of multiple entities are focused on common objectives. There are multiple roles that Cooperative Extension can play to catalyze collective action to advance health equity and well-being.

What is Health Equity?

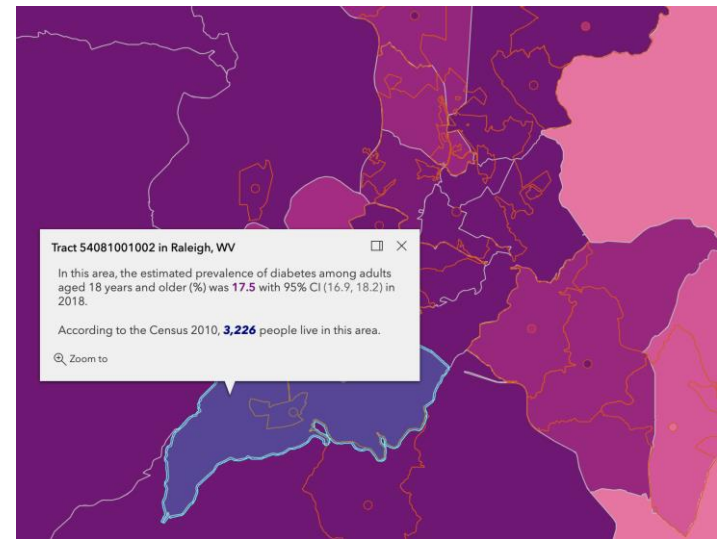
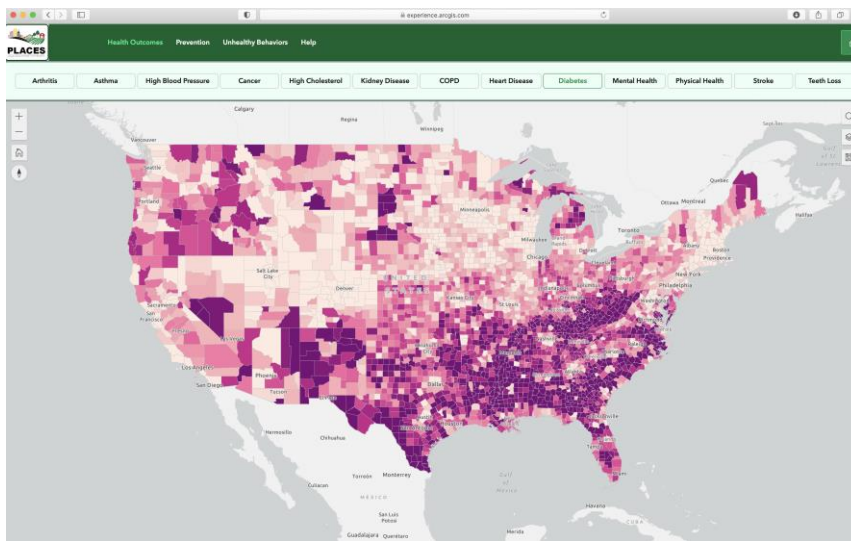
- ▶ Health equity exists when everyone has a fair and just opportunity to be as healthy as possible. RWJF
- ▶ Health equity defines a state in which everyone has the opportunity to attain their full health potential, and no one is disadvantaged in achieving this potential because of social or any other socially defined circumstances. CDC
- ▶ Health equity is the absence of avoidable, unfair, or remediable differences among groups of people, whether those groups are defined **socially, economically, demographically or geographically** or by other means of stratification. WHO



What are Social Determinants of Health?

- ▶ Factors or conditions beyond the individual that influence their overall health and well-being.
- ▶ Cooperative Extension is working to influence the social determinants of health through policy, systems, and environment (PSE) change, especially through SNAP-Ed and EFNEP.
- ▶ It is critical that approaches are tailored to unique **needs of communities bearing the greatest health burdens**. Approaches that drive resources to such communities are called **precision** approaches.
- ▶ Collective action models bring people and groups together to focus resources on a common goal.

Advances in data science allow us to identify and address inequities with **greater precision.**

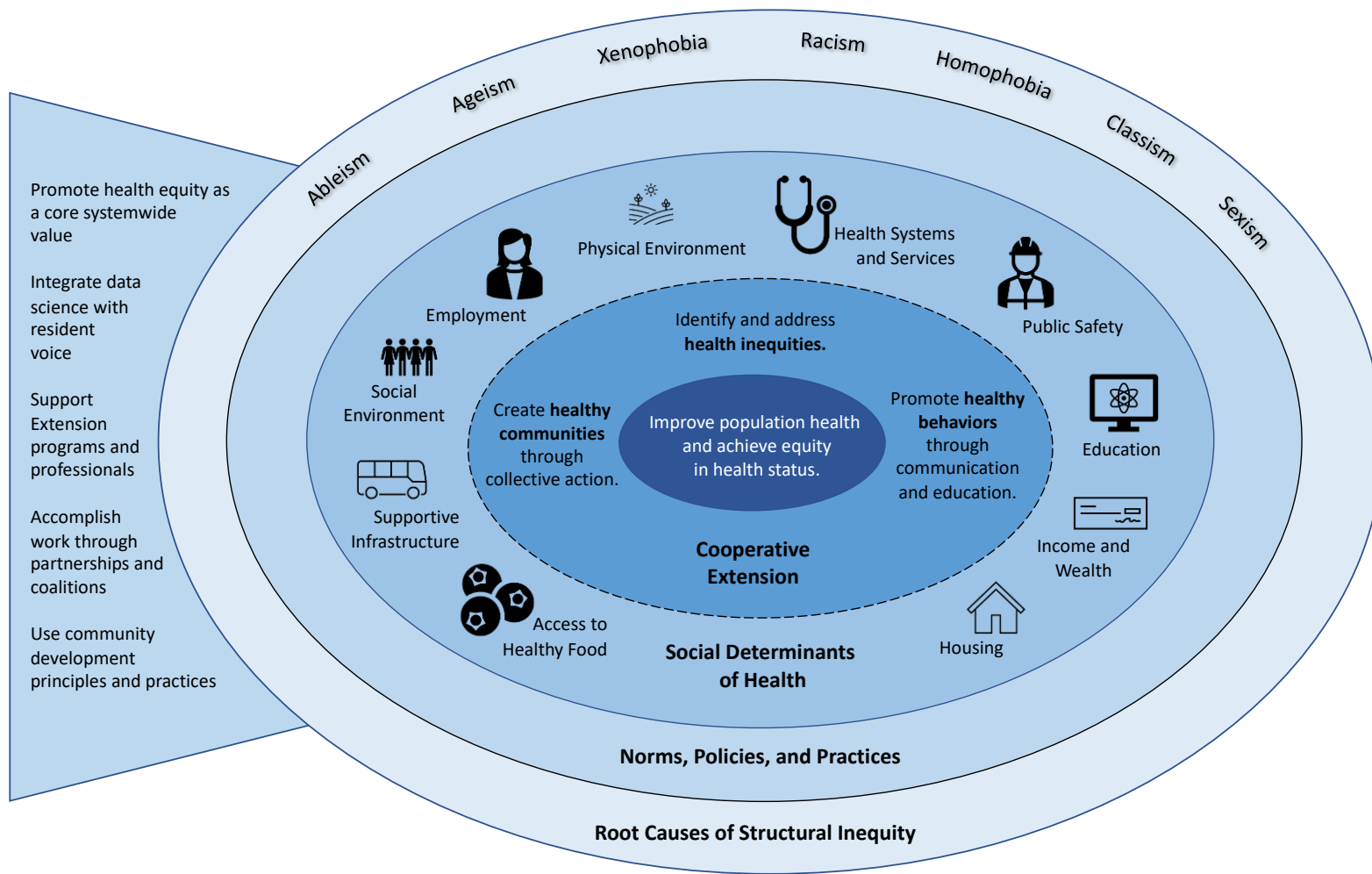



CDC's **Places: Local Data for Public Health** allows local Extension faculty and staff to access data down to the **census tract** level.

<https://www.cdc.gov/places/>

“For the past several years, Cooperative Extension’s work as a SNAP-Ed implementing agency has gradually evolved to include a focus on influencing the social determinants of health by catalyzing changes to the policies, systems, and environments in which people live their lives (Yetter and Tripp, 2020). Cooperative Extension must learn from this work and expand upon nutrition-focused PSE change to influence the other determinants of personal and population health.”

Burton et al. (2021)





Recommendation 1 - Advance health equity as a core systemwide value to ensure that all people have a fair and just opportunity to be as healthy as they can be.

Examples:

- Prioritize hiring, retention, development of a diverse and culturally competent workforce.
- Create structural mechanisms that drive resources to chronically underserved communities.
- Conduct a national audit of Extension professional capacities in health equity.

Recommendation 2 - Utilize community assessment processes that integrate data science and resident voice to identify and address health inequities with greater precision.

Examples:

- Establish and expand upon data sharing agreements so that Cooperative Extension may access the demographic and health outcome information needed to accurately apply resources and develop programs.
- Include a discussion of social determinants of health in Extension materials and programs.

Recommendation 3 - Invest in the success and visibility of Extension's health-related professionals, programs, and initiatives.

Examples:

- Increase the number and resourcing of Extension positions explicitly related to health and wellbeing in as many states as possible.
- Provide support for the National Health Outreach Conference. (Hosted by University of Missouri in 2022.)

Recommendation 4 – Establish partnerships with academic units, government agencies, corporations, nonprofit organizations, and foundations that share a commitment to reducing or elimination health inequities.

Examples:

- Establish and strengthen partnerships with academic medical centers and health science colleges such as public health, nursing, pharmacy, veterinary medicine, dentistry, and social work.
- Establish and strengthen relationships between LGUs to share expertise, leverage limited resources, and build multi-state strategies.

Recommendation 5 - Apply a community development model to advance the work of coalitions focused on influencing the social determinants of health.

Examples:

- Build an Extension workforce that is comfortable stepping away from an expert-model of program delivery to one where Extension professionals are also comfortable engaging with the community as equal partners.
- Compensate community members to partner with Extension as peer champions and community guides.

How to Access the Documents

Popular Report

<https://www.aplu.org/members/commissions/food-environment-and-renewable-resources/board-on-agriculture-assembly/cooperative-extension-section/ecop-members/ecop-documents/2021%20EquityHealth%20Sum.pdf>

Full Document

<https://www.aplu.org/members/commissions/food-environment-and-renewable-resources/board-on-agriculture-assembly/cooperative-extension-section/ecop-members/ecop-documents/2021%20EquityHealth%20Full.pdf>

Questions for Breakout Sessions

- ▶ How can the network of land-grant universities and county Extension offices add value to the work you are doing to advance nutrition security and population health?
- ▶ With whom might the Cooperative Extension System partner to advance its work to advance nutrition security and population health?
- ▶ Are there ways that land grant universities can better support your work through their research, teaching, or community engagement mission areas.



The screenshot shows the NIFA website header with the USDA logo and navigation links: ABOUT, DATA GATEWAY, BUDGET & LEGISLATION, CONTACT, and LANGUAGE. Below the header is a main navigation bar with links for HOME, TOPICS, PROGRAMS, GRANTS, TOOLS, NEWSROOM, IMPACTS, and RESOURCES. A breadcrumb trail reads: HOME > PROGRAMS > NUTRITION PROGRAMS > NIFA'S NUTRITION SECURITY WEBINAR SERIES. On the left is a sidebar menu with 'Nutrition Programs' selected, containing sub-links for 'NIFA-Funded Research on Dietary Practices' and 'National Nutrition Committees'. The main content area features the title 'NIFA's Nutrition Security Webinar Series' with social media buttons for Print, Tweet, and Share. The text below the title reads: 'Join USDA's National Institute of Food and Agriculture (NIFA) for its new virtual Nutrition Security Webinar Series. The series will feature speakers across a range of backgrounds and disciplines as they lead discussions about nutrition security during and beyond the COVID-19 pandemic.'

<https://nifa.usda.gov/program/nifa-nutrition-security-webinar-series>

Sheila.Fleischhacker@usda.gov

Welcome!

Please choose a breakout room by clicking on the breakout room icon at the bottom of your screen. You will have the freedom to switch between breakout rooms if you would like.

Discussion Questions (Same for All Rooms)

- How can the network of land-grant universities and county Extension offices add value to the work you are doing to advance nutrition security and population health?
- With whom might the Cooperative Extension System partner to advance its work to advance nutrition security and population health?
- Are there ways that land grant universities can better support your work through their research, teaching, or community engagement mission areas.